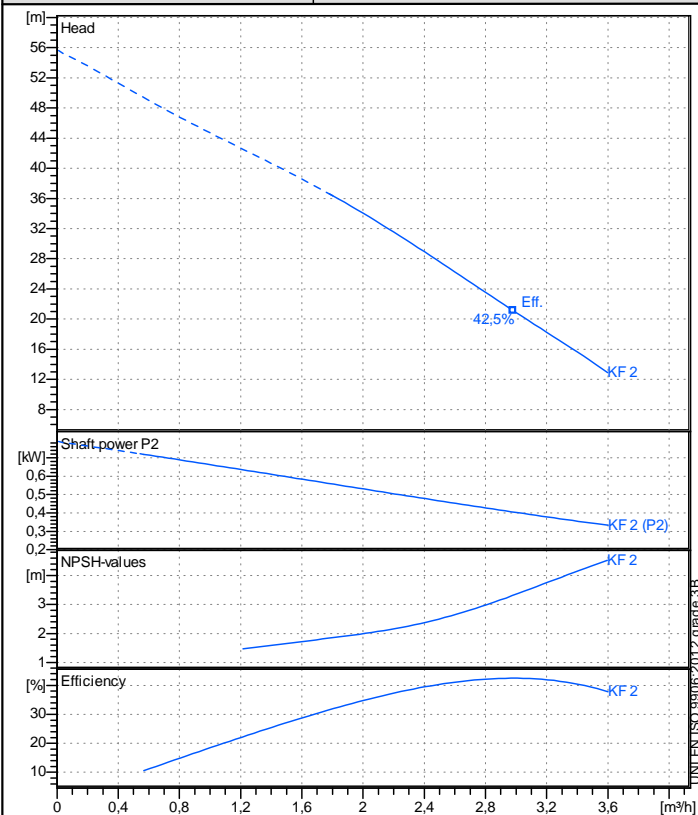


Receiver

From

Company name  
Respons. Department  
Person in charge  
Phone number  
Fax no  
E-mail address



### Operating data specification

Nominal flow	m³/h 0
Nominal head	m 0
Static head	m 0
NPSH - v value of plant	m 0
Inlet pressure	bar 0,09793
Fluid	Water, pure
Operating temperature t A	°C 20
Density at t A	kg/m³ 998,3
Kin. viscosity at t A	mm²/s 1,005

### Pump

Pump name	KF 2		
Size			
Design			
Speed rpm	2850	No of stages	1
Impeller type	Peripheral impeller		
Flow	Nominal	m³/h	
	Max-	m³/h	3,6
	Min-	m³/h	1,8
Head	Nominal	m	
	Max-	m	36,4
	Min-	m	12,9
Head H(Q=0)	m		55,6
NPSH 3%	m		
Max. working pressure	bar		5,45
Shaft power	kW		
Efficiency	%		
Max absorbed power	kW		0,71826

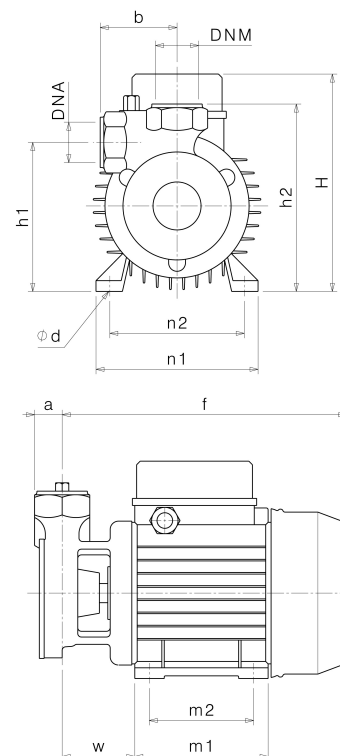
### Materials Pump

Shaft	Stainless steel AISI 420 (1.4028)
Impeller	Brass
Pump body	Cast iron EN-GJL-200
Support	Cast iron EN-GJL-200
OR	NBR Rubber
Mechanical seal	BXPG (Gra/Cer/NBR)

Motor	Frame size	71		
Manufacturer / Type	SAER 71 2 - 0,55 3~			
Rated power kW	0,55	Efficiency 4/4		0 %
Electric current A	1,8 A	Speed rpm	2950	
Electric voltage V	400 V	3~	Hz	50
Starting mode	Unknown			
Degree of protection	IP 44	Insulation class		F

### Dimensions in mm

a	23
DNA	G 1"
DNM	G 1"
f	237
H	180
h1	124
h2	156
m1	112
m2	90
n1	135
n2	112
od	7
w	64



Remarks:

Project

Project ID

Created by

Created on

Last update

2019-02-13