

ANALYSIS CERTIFICATE

Certificate according EN 10204:2005 3.1

Product name

PLASTENE R266 NATURALE

Analysis date:

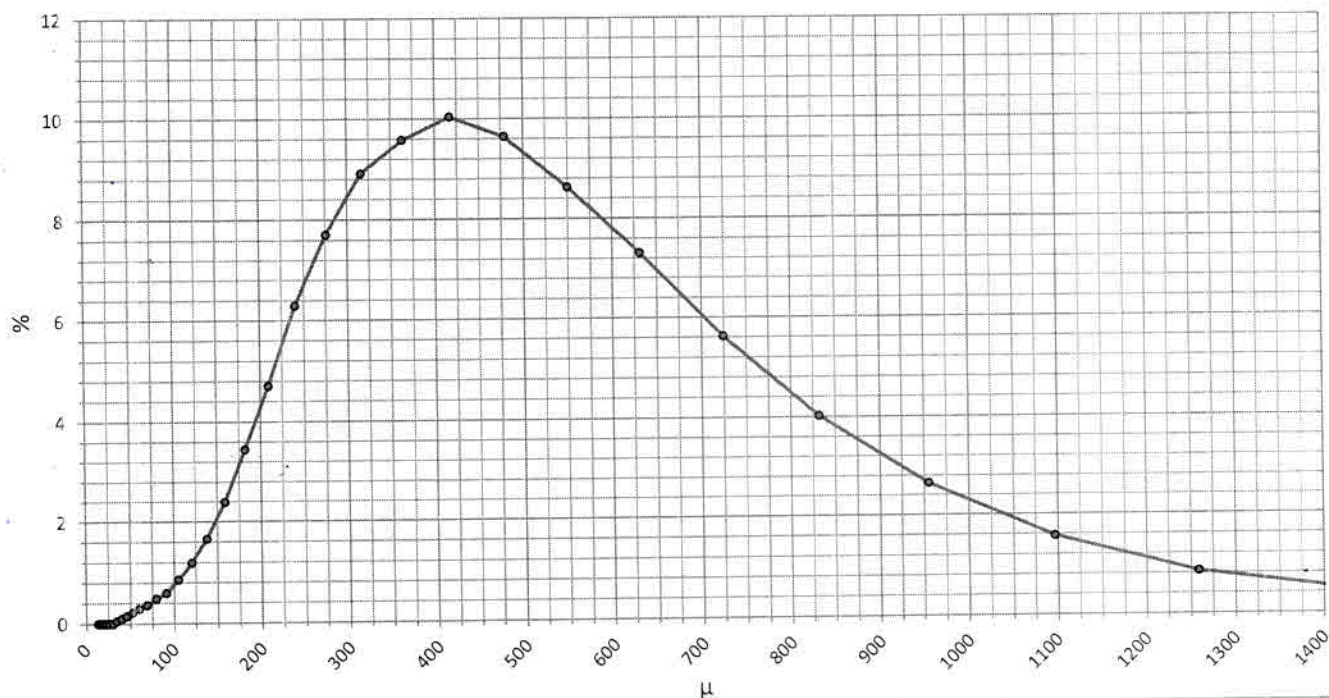
12 July 2024 13:08

Batch

90315

Property	Method	Unit	Nominal Value	Tolerance	Real Value
Melt Flow Index	ISO 1133 (190°C/2,16Kg)	g/10 min	6	+/- 1,5	7,01
Density	ISO 1183	g/cm ³	0,936	+/- 0,002	0,936
Dry flow	ASTM D1895 method A	Sec.	23	+/- 10	28,43
Dry flow	ARM Test Method v5.2	Sec.			25,91
Bulk density	ASTM D1895 method A	g/cm ³	0,38	+/- 0,06	0,32
Medium granulometry	ISO 13320	Micron	410	+/- 30	436

Particle size μ	Volume μ	Particle size μ	Volume μ	Particle size μ	Volume μ
13,183	0,00	79,433	0,48	478,630	9,64
15,136	0,00	91,201	0,59	549,541	8,63
17,378	0,00	104,713	0,86	630,957	7,31
19,953	0,00	120,266	1,19	724,436	5,62
22,909	0,00	138,038	1,66	831,764	4,02
26,303	0,00	158,489	2,39	954,993	2,64
30,200	0,00	181,970	3,45	1096,478	1,57
34,674	0,05	208,930	4,70	1258,925	0,84
39,811	0,09	239,883	6,29	1445,440	0,44
45,709	0,14	275,423	7,70	1659,587	0,22
52,481	0,21	316,228	8,92	1905,461	0,08
60,256	0,29	363,078	9,58	2187,762	0,00
69,183	0,36	416,869	10,03	2511,860	0,00



Analysis Technician